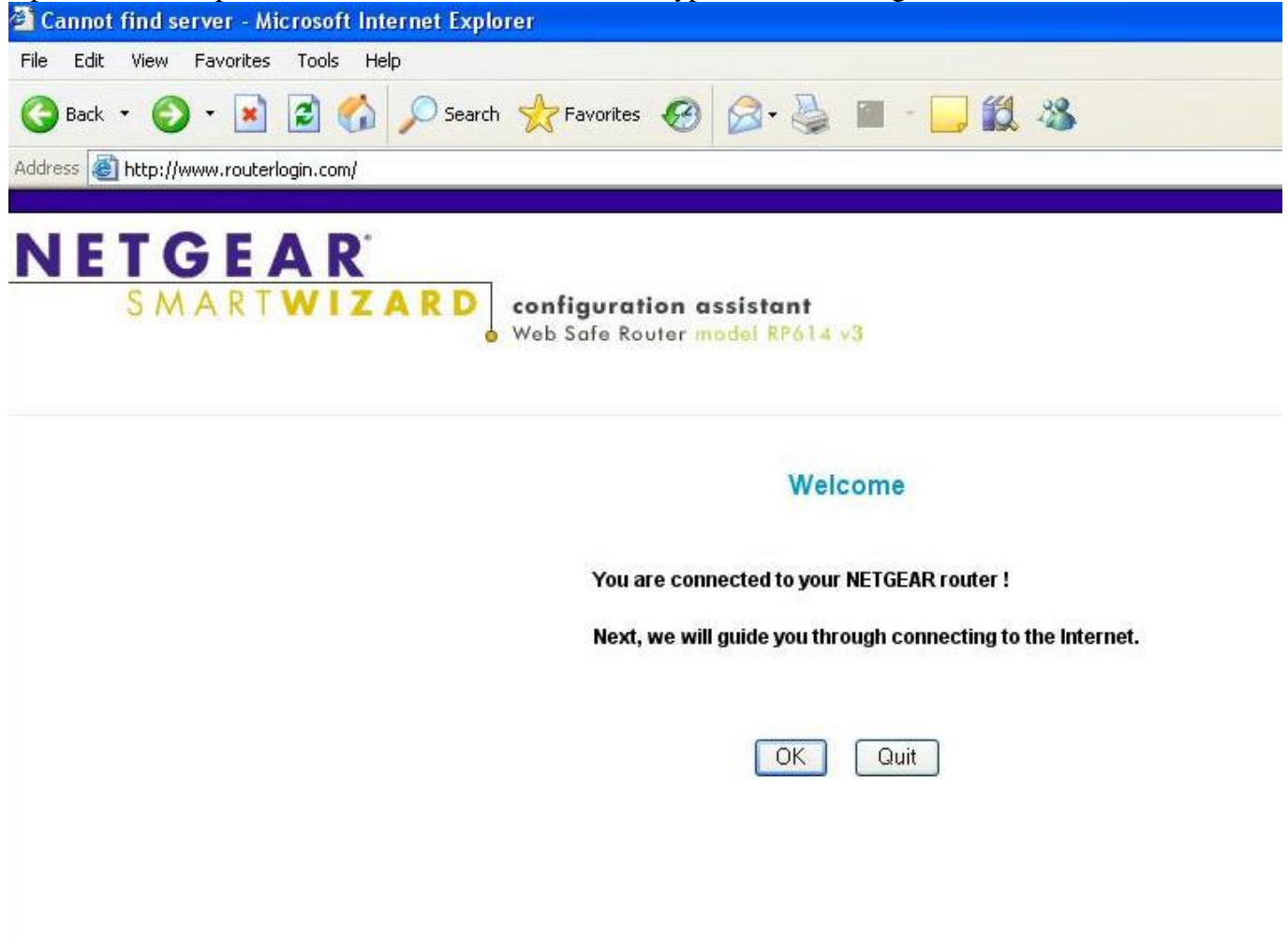


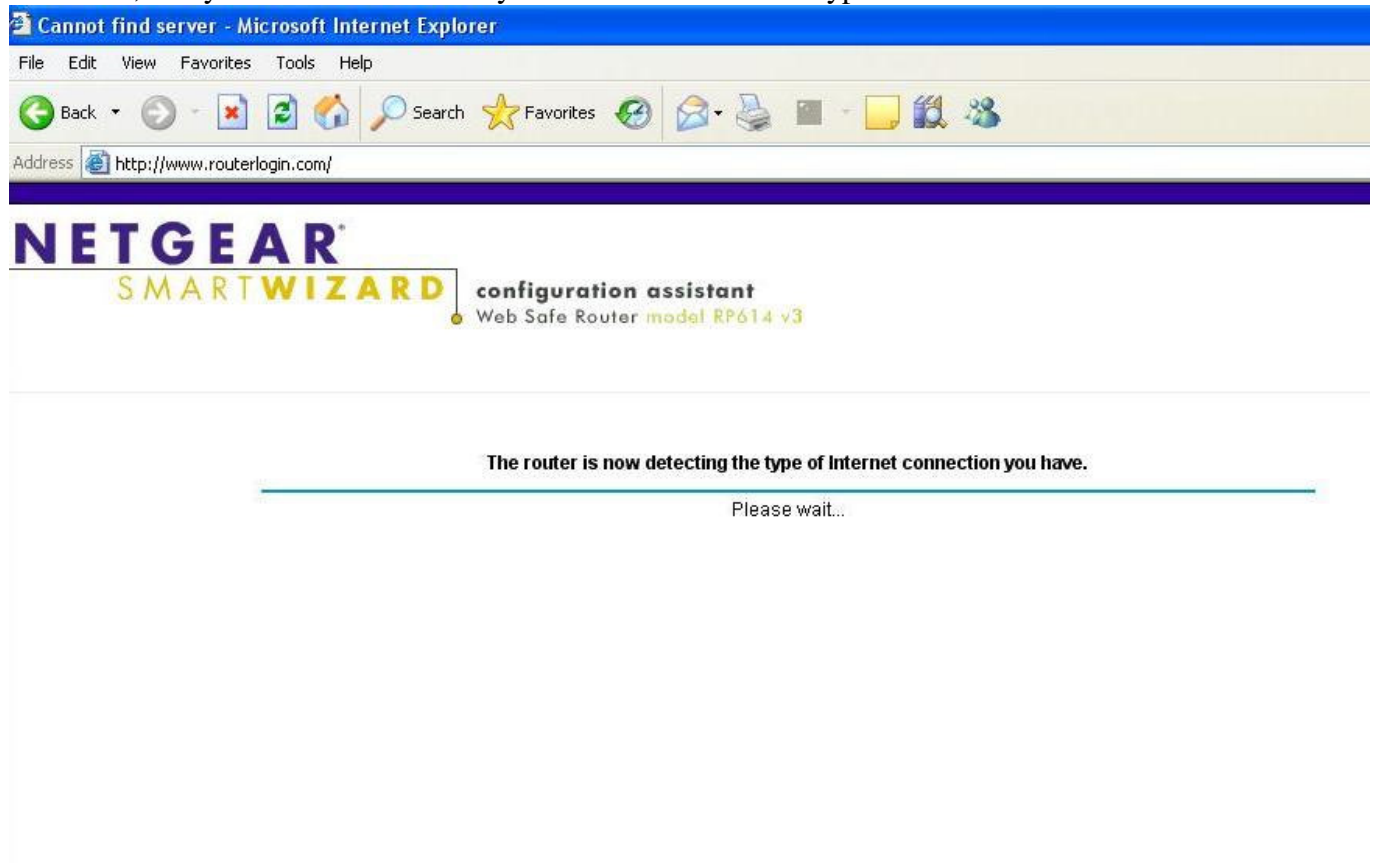
Setting up a PPPoE Connection using your Netgear RP614/WGR614 Router

Open Internet Explorer and in the "Address Bar" field type www.routerlogin.com and then click 'Go'.



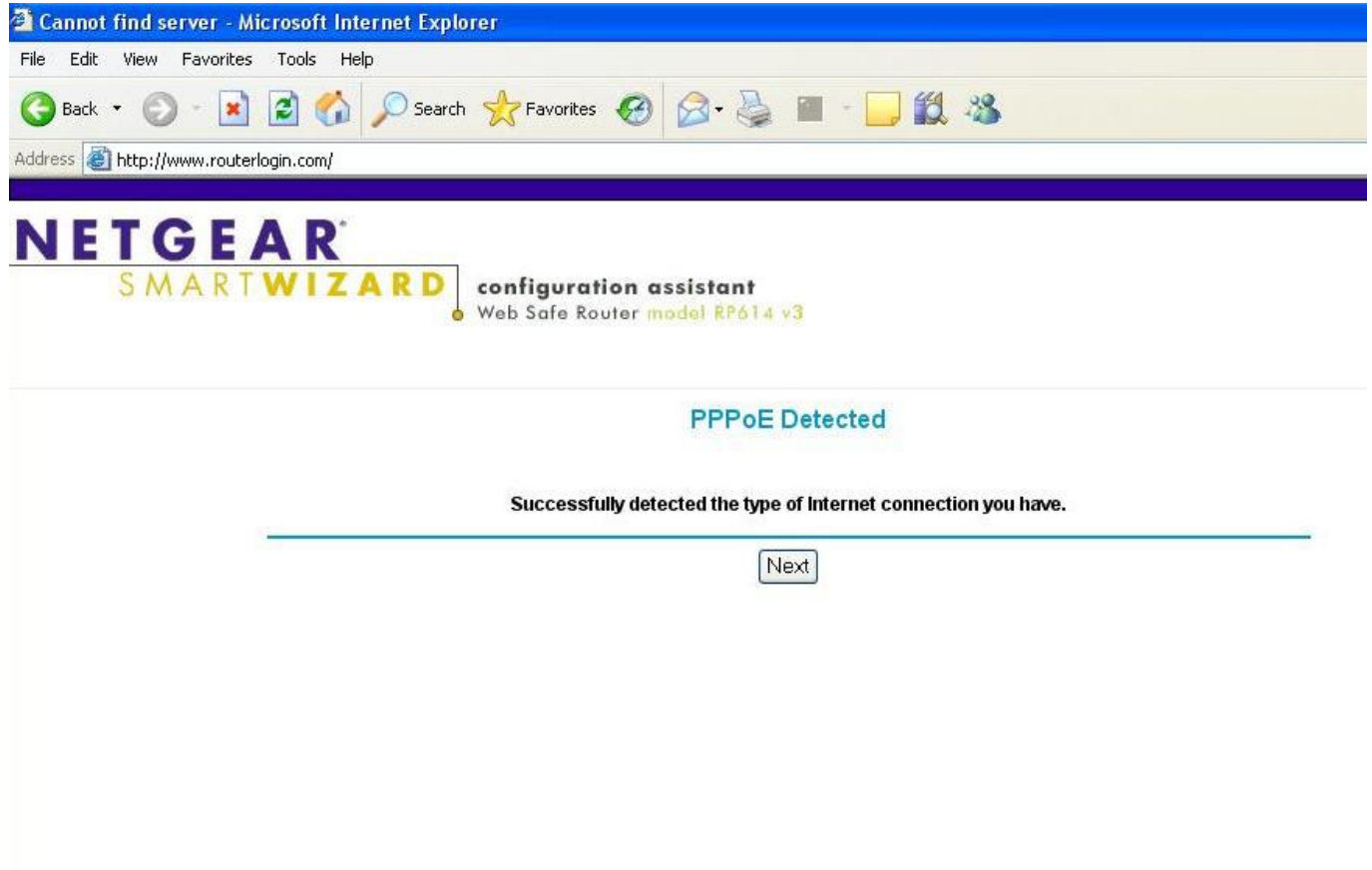
The screenshot shows the Microsoft Internet Explorer browser window. The title bar reads "Cannot find server - Microsoft Internet Explorer". The address bar contains "http://www.routerlogin.com/". The main content area displays the Netgear logo and "SMARTWIZARD configuration assistant" for a "Web Safe Router model RP614 v3". A "Welcome" message is centered on the page, stating: "You are connected to your NETGEAR router !" and "Next, we will guide you through connecting to the Internet." Below the message are two buttons: "OK" and "Quit".

Click OK, and your router will detect your internet connection type



The screenshot shows the Microsoft Internet Explorer browser window. The title bar reads "Cannot find server - Microsoft Internet Explorer". The address bar contains "http://www.routerlogin.com/". The main content area displays the Netgear logo and "SMARTWIZARD configuration assistant" for a "Web Safe Router model RP614 v3". A progress bar is visible, and the text below it reads: "The router is now detecting the type of Internet connection you have." Below the progress bar, the text "Please wait..." is displayed.

It will Detect PPPoE, Click Next



Cannot find server - Microsoft Internet Explorer

File Edit View Favorites Tools Help

Back Search Favorites

Address <http://www.routerlogin.com/>

NETGEAR

SMARTWIZARD

configuration assistant
Web Safe Router model RP614 v3

PPPoE Detected

Successfully detected the type of Internet connection you have.

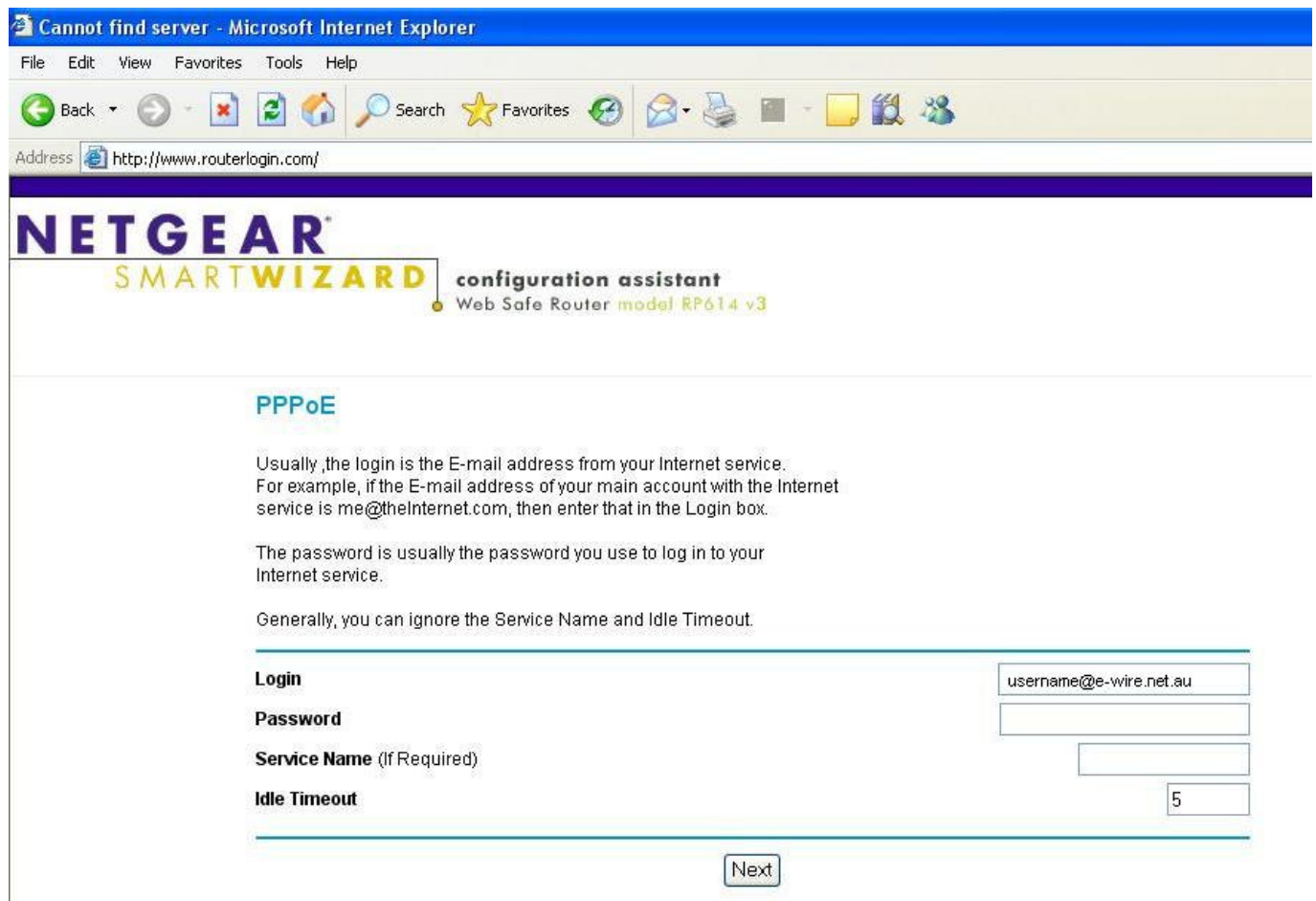
Next

Enter your full email address eg (username@e-wire.net.au) into the login field

And your password

Enter idle timeout of '0'

Please leave service name blank



Cannot find server - Microsoft Internet Explorer

File Edit View Favorites Tools Help

Back Search Favorites

Address <http://www.routerlogin.com/>

NETGEAR

SMARTWIZARD

configuration assistant
Web Safe Router model RP614 v3

PPPoE

Usually, the login is the E-mail address from your Internet service.
For example, if the E-mail address of your main account with the Internet service is me@theInternet.com, then enter that in the Login box.

The password is usually the password you use to log in to your Internet service.

Generally, you can ignore the Service Name and Idle Timeout.

Login

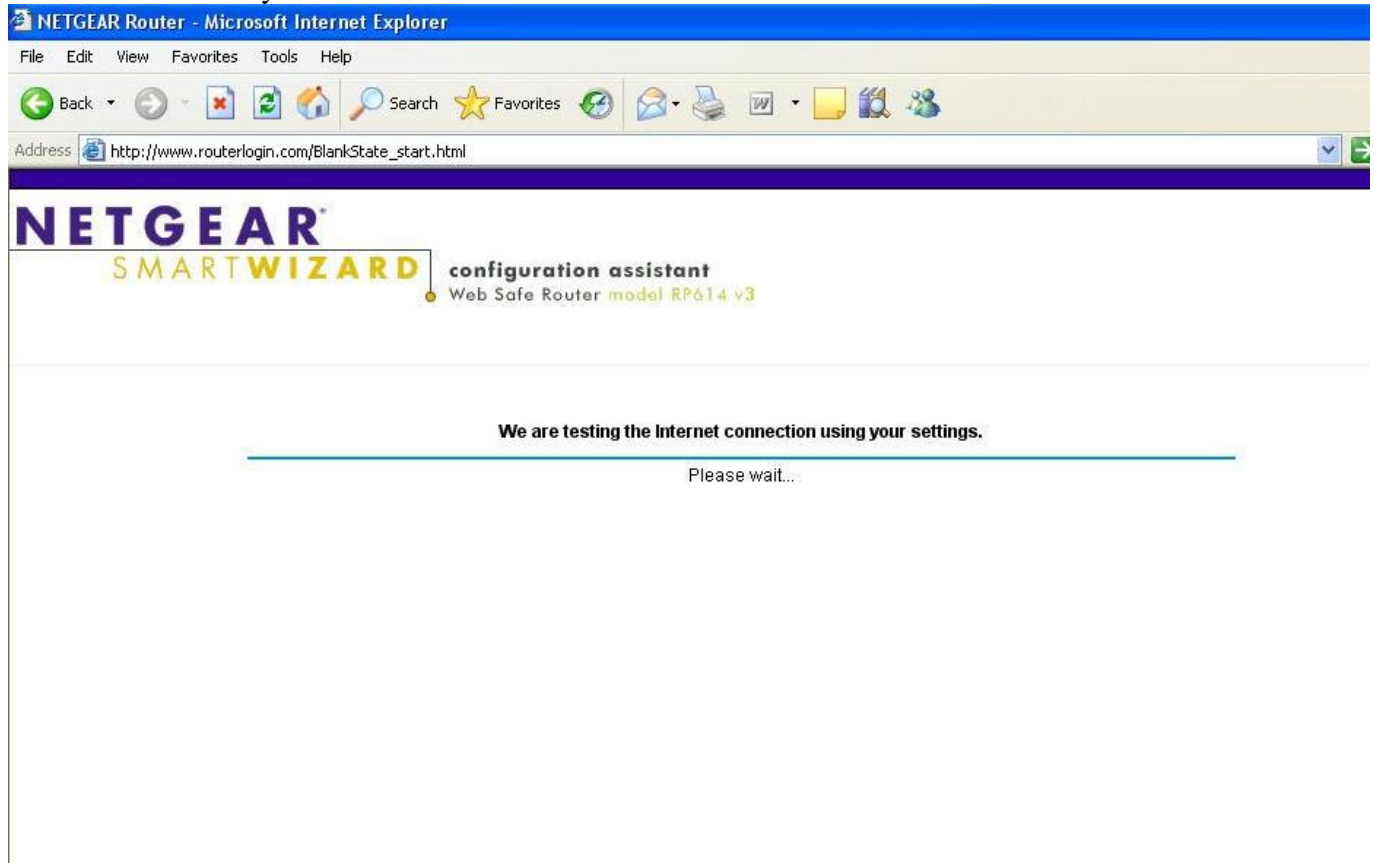
Password

Service Name (If Required)

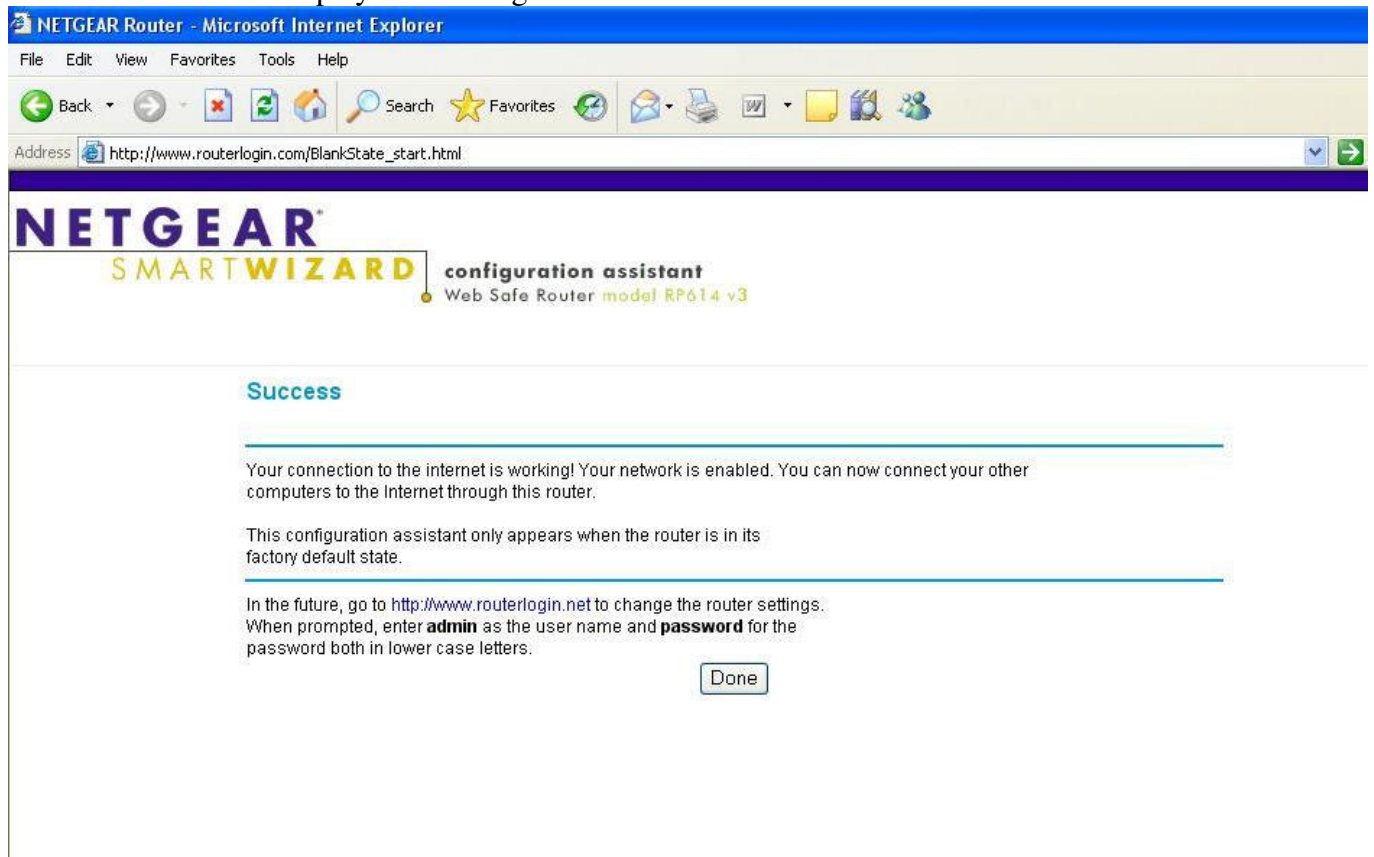
Idle Timeout

Next

The router will test your internet connection



Once finished it will display this message



Click 'Done'

And it will close your internet browser.

You are now connected to on the internet.